



SACRAMENTO
STATE

UCDAVIS
CANCER CENTER

Building a Campus/Community Collaborative

The UCDCS/Sacramento Partnership to Reduce Disparities in
Cancer Prevention, Control and Treatment

Presented at the Second Annual Conference on Community-
Based Teaching & Research: Diversity in California,
February 23-24, 2007



The Sacramento State/UCDCC Partnership

- Rationale for Partnership: Strengths and Resources of each institution
- Purpose/Mission
- Memorandum of Understanding
- Partnership Board
- 1st Year Activities:
 - P-20 Planning Grant Application
 - Campus/Community Collaborative Conference
 - Internships/Fellowships
 - Planning for national Body Image/Body Essence Ovarian Cancer Art Exhibit

Rationale: Combining Strengths and Resources of Two Academic Institutions

- UC Davis Cancer Center and UC Davis Health System:
 - NCI-designated cancer center serving over 3,000 patients per year from Northern California
 - Outreach Research and Education Program (OREP)
 - UC Davis Medical School
 - UC Davis Center for Health Disparities
 - Research labs, student-run clinics

California State University, Sacramento

- Sacramento State offers a vibrant intellectual environment with a multicultural student body of more than 28,000
- Strong applied research focus including
 - Center for California Studies
 - Center for Collaborative Policy
 - Center for Health & Human Services Research
 - Institute for Social Research
- Serves as the lead campus for the CSU system-wide Louis Stokes Alliance for Minority Participation program
 - An NSF funded initiative aimed at increasing the quality and quantity of students successfully completing Science, Technology, Engineering, and Mathematics (STEM) baccalaureate degree programs, and increasing the number of students interested in, academically qualified for and matriculated into programs of graduate study.
- Proximity to UC Davis Cancer

Purpose/Mission of Partnership

- To reduce disparities in cancer prevention, control and treatment by:
 - Providing opportunities for internships for students from Sacramento State at the UC Davis Cancer Center to attract more minority students into medicine, oncology and the sciences
 - Increasing community-based participatory research with minority and underserved populations
 - Developing and team teaching courses at the UC Davis Medical School and at Sacramento State on “Cancer as a Process”

Campus/Community Collaborative Conference

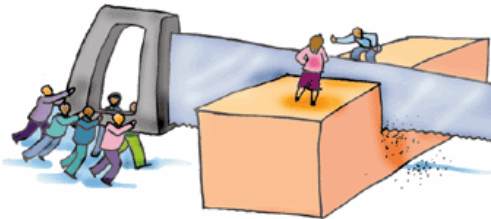
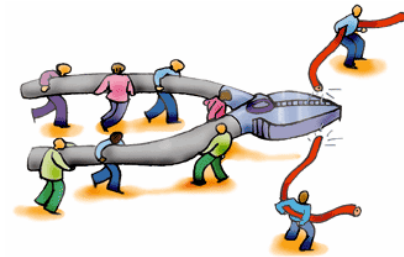


Focus of Conference

Toolbox for Building a Community Based Collaboration to Reduce Disparities in Cancer Prevention and Control in Region 3

- Primary Concepts

- *Each partner brings skills, resources and expertise to address identified community problem.*
- *Leadership/power, planning, decision-making, resources (including funding) and outcomes are fully shared.*
- *There are clear goals and expectations; good communication.*



Conference Initiated Research Teams

- Cervical Cancer: HPV Vaccine and Hispanic Families
- Reducing Colorectal Cancer in the American Indian Population
- Addressing Lung Cancer in the region

Endowed Chair

- Joint Appointment Endowed Chair: nationally recognized expert in cancer disparities research
 - Expertise in population-based, community-based participatory research involving American Indians and/or Mexican American populations
 - Leadership role in advancing the Partnership
 - Responsibilities to both institutions and to the broader community
- Partnership Endowed Chair Planning Council

Partnership Benefits

- Milestones:
 - Bringing two major institutions together
- Collaboration:
 - CSUS faculty team teaching with UCD faculty in medical school
 - CSUS interns at UCD Cancer Center
 - Faculty/Researcher/Student involvement from both institutions in research initiatives on major health problem

Partnership Benefits

- Capacity Building:
 - Opportunities for minority students to develop career tracks into medical field
 - Enhancing research capacity through joint ventures (HCRI and ISR as an illustration)
 - Involving universities, non-profit organizations and the community in addressing a major social/health problem

Partnership Challenges

- Sustainability:
 - Ensuring that partnership is more than a “series of events”
 - Keeping interest
- Partnership base:
 - Partnership must truly involve the community, and not simply be the two universities
- Funding:
 - Partnership projects require support

Thank You!!

Ernest L. Cowles, Ph.D., Director
Institute for Social Research &
Professor of Sociology
California State University, Sacramento
6000 J Street
Sacramento, CA 95819-6101
(916) 278-4317; cowlese@csus.edu

Marlene M. von Friederichs-
Fitzwater, Ph.D.
Assistant Adjunct Professor,
Hematology & Oncology,
Department of Internal Medicine,
University of California, Davis,
School of Medicine & Director,
Outreach Research and Education
Program; UC Davis Cancer
Center FSSB, 4800 2nd Ave., Ste.
2200 (Office 2210) Mailing
Address: 4501 X Street, Ste. 3016
Sacramento, CA 95817-6165
(916) 734-8810
Fax: (916) 734-7451
Pager: (916) 762-8537
marlene.vonfriederichs-
fitzwater@ucdmc.ucdavis.edu